

Draft version

APPENDIX 1

Safer Harrow

Crime, Disorder and

Drugs Strategy

2005-2008

Please send comments to:
Dean McStay, Crime Reduction Officer, Harrow Council
Dean.mcstay@harrow.gov.uk
02084241663

Please note: all graphs, maps, tables, figures, appendices, glossary, page numbers etc will be inserted at the publication stage.

Foreword

We all know the huge impact that crime, disorder, drugs and anti-social behaviour can have on the lives of our residents. In Harrow, there is a large gap between residents' perceptions of crime and the actual figures that are collected by local agencies. This is evidenced in the Safer Harrow Crime/Drugs audit, which aimed to identify the issues faced by residents in Harrow. The 2004 Crime/Drugs Audit showed that Harrow is a low crime borough as it contributes only 2% of London's crime rate. Over the previous three years, Harrow has had the second lowest crime rate in London (based upon number of crimes per 1000 population) and in 2003/2004 Harrow had the lowest crime rate in London as well as its 'family' grouping of similar boroughs¹. Harrow's crime rate is also below the national average.

However, 67% of Harrow residents believe that their quality of life has worsened over the previous three years due to crime. The Council's Best Value Publication survey showed that reducing crime is the top priority of the public. Fear of crime levels are also disproportionately high, with the Harrow People Crime Audit survey showing that 64% of people feel unsafe walking alone after dark in the town centre, compared to the national average of 18%. Additionally, 39% of people indicated that they did not report a crime to the police, their main reason being that no action would be taken.

There are strong indications from the Harrow People Survey that the types of crime underreported generally fall into the category of nuisance and anti-social behaviour related crimes. While main priority crime e.g. Robbery, Burglary and Auto-crime fortunately only affect a minority of our residents, low level 'quality of life' issues have a huge impact on the daily lives of a large majority of our residents.

The 2005-2008 Safer Harrow Crime and Drugs Strategy will improve the quality of life of residents by focusing on four related priorities that target offenders, hotspot locations and victims. One of the key priorities is tackling Anti-Social Behaviour and other quality of life issues. Already, we have set up an Anti-social Behaviour Team co-located at South Harrow Police Station; we have started rolling out the Safer Neighbourhoods Policing Reassurance Teams and introduced the New Harrow Project, which focuses on improving the streetscene. A focus for the next three years is to ensure that these initiatives are linked together and provide our residents with tangible improvements to their quality of life.

The Safer Harrow Partnership is committed to working together to make Harrow a safer place to live, work and visit. The public has a major role to play in achieving this, as implementing simple crime prevention measures can prevent many crimes from happening in the first place. We look forward to working with all of you as we make Harrow a much safer place in the next three years.

To be signed by Safer Harrow Management Group representatives

¹ Harrow belongs to Family group 3, which also includes the London boroughs of Ealing, Barnet, Bromley, Hounslow, Enfield, Hillingdon, Redbridge, Havering, Bexley, Harrow and Sutton.

Acknowledgements

This strategy has been produced through the combined effort of all agencies in the Safer Harrow Partnership – See Appendix 1 for a list of agencies represented. The Safer Harrow Management Group would like to express their thanks to: Ian Pearce (Crime Reduction Manager, Harrow Council), John Whittaker (Partnerships Chief Inspector, Harrow Police) for both championing the process and providing valuable comments, experience and advice and Dean McStay (Crime Reduction Officer, Harrow Council) for project managing the audit process as well as writing and developing the strategy.

Thanks also goes to members of the Safer Harrow Audit Project team, especially Gemma Bowler, David Bentley and Thomas Kalber (GIS Development Officer, GIS trainees) who have all spent many long hours gathering, cleaning and mapping data to enable its inclusion in the audit and strategy. Derek Barter (Partnerships Inspector, Harrow Police), Jane Thomas (Harrow PCT), Mark Gillett (Youth Development Manager, Harrow Council) and Lizzie Reid (DAT Co-ordinator, Harrow Council) for assisting with the whole process and for acting as a sounding board.

The Safer Harrow Management Group would also like to express thanks to Middlesex University, particularly Nick Feast (Researcher) for all his valuable work in developing the audit and Peter Kennison (Lecturer) for overseeing the audit contract and attending public meetings.

Further acknowledgement also to Richard Segalov, Margaret McGeehan and Ceri Silverstone (Harrow YOT), Jane Kennedy (Harrow Drug and Alcohol Service), Sunil Gloria (Higher Crime Analyst, Harrow Police), Gareth Llywelyn – Roberts (Head of Community Safety Services, Harrow Council), Mick Newton (Fire Service), Jackie McCormack (ASB Co-ordinator), Jasbinder Baddhan (Hate Crime Co-ordinator) and Parm Parmar (Domestic Violence Co-ordinator) for providing data to include in the audit and strategy process. Thanks must also go to The Jill Dando Institute of Crime Science Team for their assistance in gathering London Wide data sets and the Government Office for London Crime and Drugs Division for providing guidance and support during the process.

Thanks must also go to Bob Carr (Harrow Police Borough Commander), Allan Aubeelack (DCI Harrow Police), Gus Nabney (Superintendent Harrow Police) and Hermione Wright (London Probation Service) for providing comments and suggestions on the strategy,

The Safer Harrow Partnership would also like to express thanks to all other agencies and members of the public who have inputted and contributed information and feedback that has helped inform the Safer Harrow Crime and Drugs Strategy 2005-2008.

Contents

• Foreword	i
• Acknowledgements	ii
• Executive Summary and Vision	iii
• Introduction	1
• Harrow Profile	3
• Overview of the previous Strategy performance	5
• Links to relevant Plans and Issues	7
• How the Strategy Priorities were arrived at	8
• Crime/Drugs Audit Findings	9
• Strategy priorities:	
• Priority 1: To reduce the impact of ASB and fear of crime by improving quality of life and the public realm through the ASB Strategy and Liveability Agenda.	11
• Priority 2: Violence Against the Person	13
• Priority 3: Property Crime	14
• Priority 4: Tackling and Preventing Youth Crime	15
• Golden Cross-cutting Themes	
• Priority 5: Community Involvement and Diversity	16
• Priority 6: Implement Prolific and Priority Offenders Strategy	17
• Priority 7: Drugs and Alcohol	19
• Partnership Delivery Structure and Accountabilities	20
• Partnership Investment required	21
• Appendices	22
• Glossary	
• Contact Details	27
• Translation Request Form	

Executive Summary

The Safer Harrow Partnership is pleased to present the 2005-2008 Safer Harrow Crime and Drugs Strategy.

The Crime and Disorder Act 1998, as amended by the Police Reform Act 2002, places a responsibility on Local Authorities, Police, Fire Service, Probation and Health Authorities to produce a joint strategy to tackle crime, disorder, drugs and anti-social behaviour. A detailed Crime/Drugs Audit was published in October 2004, which provided information and analysis concerning the levels and patterns of crime in the borough. Following extensive consultation with residents and partnership agencies, four key priorities and three crosscutting themes have been agreed by the Safer Harrow Partnership. Most importantly, a large number of residents and agencies have been involved in shaping the priorities.

The audit found that there is a large gap that needs to be bridged between residents' perceptions about their safety and reported crime figures. Harrow was rated the second safest London borough in the previous three years, being the safest in 2003/2004 with crime only accounting for 2% of the London rate. However, feedback from resident surveys shows that crime still remains the number one issue in the borough and 67% of residents believe their quality of life in relation to crime has diminished over the previous three years. Residents' fear of crime is also abnormally high, with 64% of people indicating that they feel unsafe after dark in the town centre compared to a national rate of 18%. Residents also indicated that they do not feel confident in reporting low level nuisance and anti-social behaviour related crimes, as they believe local agencies will not take action or do not have the resources to take action.

To combat this apparent gap, the Safer Harrow Partnership will implement four key priorities and integrate three crosscutting themes into all of its work areas. These all contribute towards improving the quality of life of Harrow residents. The four priorities have been developed using the "Routine Activity Theory Model" (see appendix 1) and focuses efforts on hotspot locations, victims and offenders. The four priorities identified are:

- Reduce Anti-Social Behaviour on Harrow Residents through the ASB strategy, Liveability agenda and improvements in the public realm.
- Property Crime
- Violence Against the Person
- Tackling and Preventing Youth Crime

We also intend to mainstream three crosscutting themes that each group leading on the above priorities must clearly demonstrate that they are implementing these important policy areas, such as equalities, priority offenders and drugs education. These are:

- Implement Prolific and Priority Offenders Strategy
- Community Involvement and Diversity
- Drugs and Alcohol

The Safer Harrow Partnership is committed to ensuring that we work together to enhance the quality of life of residents and make Harrow a safer place to live, work and visit in the next three years.

Safer Harrow Vision: To achieve a 17.5-20% reduction in overall crime² by 2008 that will make Harrow a safer place to live, work and visit.

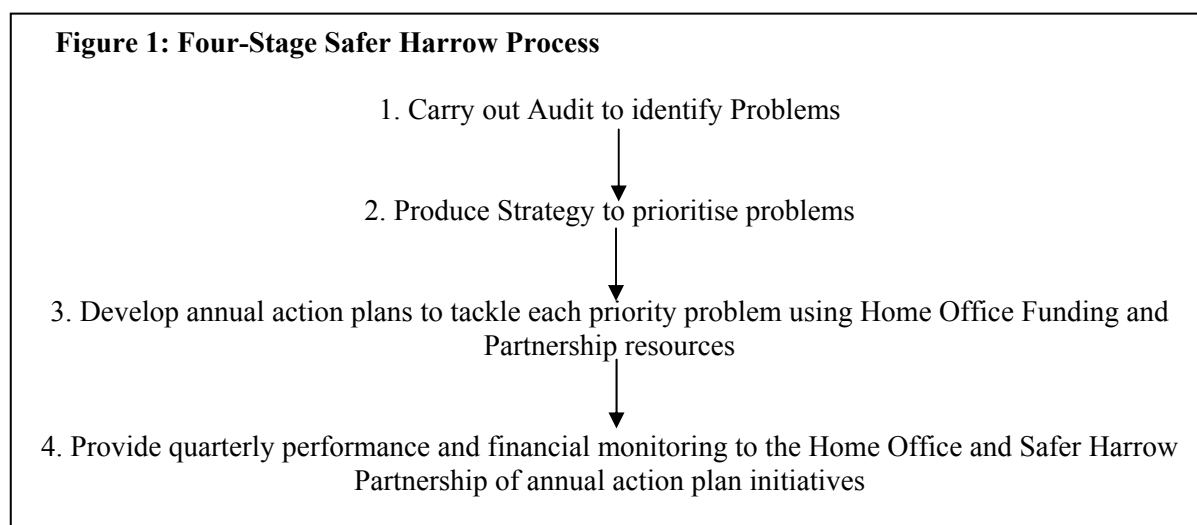
² Overall crime is defined as those crimes included in the Home Office British Crime Survey Comparator Crimes for 2003/2004 and includes Theft or unauthorised taking of vehicle and theft from a vehicle (incl. attempts), vehicle interference, domestic burglary (incl. attempts), theft or unauthorised taking of a cycle, theft from person, criminal damage, common assault (including on PC), woundings (serious and other) and robbery of personal property.

Introduction

The Safer Harrow Partnership is committed to achieving the above target in line with the Home Office Local Public Service Agreement and this strategy sets out how this will be achieved by 2008.

Section 5 of the Crime and Disorder Act 1998 as amended by sections 97 and 98 of the Police Reform Act 2002, requires Local Councils, Police, Fire Service, Probation and Health authorities to set up Crime and Disorder Reduction Partnerships (CDRP's) to work together to tackle local crime and drug problems. Drugs and anti-social behaviour are integrated into this process for the first time.

To oversee the audit to strategy process, a multi-agency project group was set up by the Safer Harrow Partnership. The Safer Harrow Partnership is required to undertake four steps in implementing the Crime and Disorder Act 1998. As an example of good practice, the Safer Harrow Partnership is committed to implementing a four-stage work process detailed in figure 1 over the next three years. Stages three and four are not required by legislation but will greatly assist the Safer Harrow Partnership achieve this crime reduction target.



Process implemented

Firstly, we are required to undertake a three-year crime and drug audit to determine what the problems are in Harrow. We have achieved this by collecting various datasets, surveys, plans, research, and examples of best practice from agencies and undertaking an in-depth analysis to determine the audit findings. We published the audit results and consulted local residents and groups to determine whether they agree or disagree with the findings.

Secondly, the Safer Harrow Partnership is required to draw up and implement a three-year strategy to address the problems identified. The strategy is presented in this document and outlines the priority areas that have been identified through the audit and consultation process.

Thirdly, the groups leading on each priority will develop action plans to combat specific issues that were identified through the audit and consultation process. The action plans will highlight specific partnership initiatives that aim to tackle each of the strategy priority areas. The Safer Harrow Partnership will use Home Office funding and Partnership resources to support the initiatives highlighted in the action plans. The action plans will clearly detail resources required, activities undertaken, reporting mechanisms as well as performance indicators and expected outcomes. The lead groups will also be required to take into account in developing their action plans the local area agreement targets that Safer Harrow has negotiated with the Home Office.

Finally, we will develop a robust performance management system to ensure clear accountability and performance improvement is achieved. Each lead group will be required to report back quarterly on financial and performance progress against their action plan initiatives. The Safer Harrow Management group will be the responsible body locally and the Home Office the responsible body nationally (see the section on partnership responsibilities and accountabilities).

Outline of Strategy

The Safer Harrow Crime and Drugs Strategy is contained in four main sections. Firstly, the profile of Harrow is described. Secondly, the main issues identified in the audit and consultation process are detailed. Thirdly, the process that has been undertaken to identify the priority areas is outlined. Finally, the priority areas are individually described, including the evidence base, performance targets, lead agency and the broad interventions to be implemented. Additionally, how the strategy will be monitored and the reporting structures locally and nationally is highlighted.

Harrow profile (Census table to be inserted)

The London Borough of Harrow is an outer London suburb situated to the north west of the capital. The London Boroughs of Barnet, Brent, Ealing and Hillingdon all border Harrow plus the county of Hertfordshire. As the map indicates the borough is split into 21 wards, covering a total area of just over 5,000 hectares.

Harrow is very diverse in terms of its makeup, consisting of a number of large residential areas and a thriving business and commercial centre as well as some more rural areas that stretch into the countryside. The transport links within the borough are well situated and a number of mainline and underground stations provide a quick and easy route into the city for commuters. The central bus station and Harrow-on-the-Hill transport interchange forms the borough's main transport hub, which is one of the busiest in London and conveniently, located next to the main shopping areas.

The 2001 Census calculated Harrow's resident population to be 206,814 (an increase of 5,580 since the 1991 census). The table and graph below provide a breakdown of the Borough's population in terms of age and gender. As can be seen, 52% of Harrow's resident population are females, with 48% being male. Life expectancy in Harrow is above the London rate, with only Greenhill and Wealdstone being below the London average. Almost 47,500 people aged less than 18 years live within the borough, accounting for nearly a quarter of the population. Whilst just under a third of the population fit within the high risk victim age group of 15-34 years old. 7% of the population (14,609 people) are over 75 years old, the tenth highest proportion in London.

Harrow accommodates a large and diverse ethnic/multi-cultural community, ranking fifth nationally in terms of the number of (non-white) ethnic residents. According to the 2001 census, 41.2% of Harrow's population are from ethnic minority groups³, the largest of which is Indian, making up 21.9% of the population. Although nearly three quarters of the borough residents were born within the UK, there remains just over 58,000 people living in Harrow that originate from outside the European Union. This group includes people from Afghanistan, Somalia and China.

Due to the ethnic composition of the borough, religious backgrounds are also very diverse in Harrow. 47.3% of the Harrow residents are Christians, well below the average of 72% for England and Wales. Nearly 20% of the borough's population is Hindu, meaning that Harrow has the highest proportion of Hindus in England and Wales. Harrow also has a very large Jewish community, which is the third largest in England and Wales.

Harrow features as the 232nd least deprived borough out of all the 354 English districts. This makes Harrow the second least deprived borough in London. However, Harrow ranks 139th out of 354 English districts on crime deprivation and 142nd for income deprivation. Only 3.1% of the population are unemployed but a quarter of the unemployed in Harrow are males aged 16-24.

The Vitality Profile Project⁴ commissioned by the Harrow Strategic Partnership demonstrates that while Harrow wards do not score highly as deprived,⁵ there are many pockets of deprivation that when combined, are a challenge to key statutory services. Harrow rates poorly in terms of housing deprivation indices. Rayners Lane has a population density at 100 people

³ Irish people have been included as an ethnic minority in the 2001 Census

⁴ Vitality profiles were commissioned by the Harrow Strategic Partnership and use a range of local agency datasets to demonstrate what the issues are in Harrow.

⁵ ONS multiple deprivation index scores across England and Wales

per hectare, compared to Harrow's average of 41 and the inner London average of 87. There are 1622 registered homeless in Harrow, largely concentrated in the wards between the town centre and Wealdstone.

Those deemed to be in housing need are concentrated in the centre of the borough with Wealdstone and Marlborough wards rating the highest, with Roxbourne and Stanmore Park having the highest levels of socially rented housing. Only 26% of households are single occupancy compared to a London average of 35% but pensioners living alone account for over half of the single occupancy households. 22% of Harrow's households are pensioner households, with the highest proportions being in Canons and Stanmore Park. Over a third of all households have dependent children which is higher than the London rate of 29%. The highest concentrations are in the east and south west of the borough. Teenage pregnancy levels are less than half of the average rate for London but low birth weight rates are higher in Harrow than rates for London and nationally. Free school meal eligibility is slightly higher than the national average but only two thirds of the London rate, with Roxbourne, Greenhill, Edgware, Wealdstone and Marlborough being the highest wards.

Overview of previous strategy performance

The Safer Harrow 2002-2005 Crime and Disorder Strategy identified 8 theme areas and two emerging issues that needed to be addressed within the three year period by partner agencies. Below is an overview of the safer Harrow's performance over the 2001-2004 years period. The traffic light system (green, red and amber) is used to indicate success or failure to meet the agreed strategy targets.

- Autocrime

Target: To reduce the level of autocrime offences

Achievement: 8.5% increase since 2001

- Domestic Burglary

Target: To reduce the level of burglary offences

Achievement: 10% reduction since 2001

- Street Crime

Target: To reduce the rise in Street Crime

Achievement: 20% reduction since 2001

- Hate Crime

Target: Reduction in racial and homophobic offences and an increase in judicial disposals to ensure offenders are brought to justice.

Achievement: 24% reduction in racist offences and a 22.9% judicial disposal rate above the MPS target of 18%. 111% increase in homophobic crimes (but relates to only 34 offences over the three-year period). 50% judicial disposal rate above the Metropolitan Police Service target of 22%

- Domestic Violence

Target: To raise awareness of domestic violence, encouraging reporting with the overall aim of reducing the level of such offences.

Achievement: 0.8% reduction in offences since 2001. 17% reduction in repeat offenders. 30% judicial disposal rate above the Metropolitan Police Service target of 18%.

- Drugs related crime

Target: To reduce the level of drug and alcohol related crime

Achievement: 27% reduction in drug offences since 2001. Disturbances in licensed premises have increased by 8% since 2001. Drunkenness has increased by 36% since 2001.

- Quality of life, including ASB

Target: To reduce the level of disorder and fear of crime and improve the quality of life of Harrow residents.

Achievement: Disorder has increased by 0.2% since 2001. According to the Harrow People Crime & Drugs survey undertaken during 2004, the number of residents stating that they felt unsafe was 39.5% and 67% of residents perceive that their quality of life due to crime has worsened since 2001.

- Young People and Crime

Target: To reduce the level of offending and re-offending by young people.

Achievement: There has been a 46% reduction in youth offending over the last three years. There has been a 60% reduction in re-offending rates

Summary of performance

As can be seen from above, there have been notable achievements over the previous three-year period. Five out of the eight theme areas have achieved their targets. Of particular note is the significant reduction in young people offending and the notable reduction in street crime. Successful projects implemented during the past three years have been the Sanctuary project, SafeHomes project, expansion of the CCTV network, Crossroadz DVD, Safer Neighbourhoods ward-based policing roll-out, Byron Recreation Ground project and setting up the Anti-Social Behaviour Unit at South Harrow Police Station. However, there have been rises in disorder incidences and surveys indicate that residents believe that their quality of life has worsened over the past three years. This may be partly due to quality of life related crimes like alcohol related and criminal damage offences rising during the audit period and also because of increased reporting due to the Anti-Social Behaviour Unit being set up.

The previous strategy was over ambitious in its endeavours and tried to tackle too many priorities. This meant that partnership resources were spread too thinly and could not be targeted effectively to address priority concerns. In addition, the majority of Home Office project development funding was used to meet partnership obligations (e.g. staff to plan and monitor performance) under the Crime and Disorder Act and not used to implement projects that would have delivered tangible benefits to residents.

The Safer Harrow Partnership is focusing on only seven strategy areas and the Safer Harrow Management Group is committed to mainstreaming community safety obligations across local statutory agencies. Achieving both of these will allow Home Office funding to be used to make a real difference to the quality of life of Harrow residents.

Links to other relevant partnership plans

The Safer Harrow Crime and Drugs Strategy 2005 -2008 both influences and is influenced by, a wide number of cross-cutting plans and strategies, the main plans are listed below:

National

Home Office Plan 2005-2008 includes fifteen national overarching priorities that are directly related to community safety e.g. Public Service Agreement on reducing crime by 15% and others that are indirectly related e.g. community cohesion.

National Drugs Strategy includes the four main priorities of communities, availabilities, treatment and young people.

National Policing Plan includes three main priorities: reduce anti-social behaviour, combat priority crimes of burglary, street crime and autocrime and enhance community reassurance.

British Transport Police Plan highlights that a key theme is to provide reassurance through a policing service that is intelligence led, works in partnership to reduce crime, fear of crime and anti-social behaviour.

Regional

London Fire Safety Plan has four main priorities with specific targets to prevent fires from occurring and to reduce the number of malicious fires and hoax calls.

London Probation Plan includes priorities to reduce re-offending and to rehabilitate offenders by changing their attitudes and behaviours. Probation officers work, in conjunction with other agencies, to ensure that the major factors that affect re-offending i.e. housing, education, employment and mental health are addressed.

Mayor's Transport Strategy plan includes priorities that focus on improving road safety, improving the street scene and improving accessibility, particularly for the safety of women and vulnerable users.

Local

Community Strategy includes Safer Harrow as one of the seven themes identified by the Harrow Strategic Partnership (HSP). The HSP has developed ten priorities that include tackling anti-social behaviour, burglary and fear of crime.

Harrow Primary Care Trust Plan includes a particular emphasis on providing treatment services for vulnerable people, including those with mental health and drug and alcohol issues.

Harrow Policing Plan includes a focus on property crimes, violent crime, anti-social behaviour, drugs, sexual offences, hate crime and domestic violence.

Harrow Anti-Social Behaviour Strategy adopts three main approaches to tackling anti-social behaviour, prevention, education and enforcement.

New Harrow Project Plan highlights the importance of improving the streetscape by removing potential 'crime generators' such as graffiti, abandoned cars etc, to improve the quality of life of residents.

Safer Neighbourhoods Plans details specific concerns of residents in each of the Safer Neighbourhood roll out areas and how they will be tackled to improve quality of life.

Preventative Strategy co-ordinates a range of plans aimed at the vulnerable, including the Children's Fund, Connexions, Area Child Protection, Mental Health and Healthy Schools to ensure co-ordinated services are provided.

Youth Justice Plan highlights the importance of multi-agency partnership working to reduce re-offending and offending by young people in Harrow. Also details the importance of implementing preventative services.

Harrow Crime Prevention Panel Plan includes a priority of working with the community to reduce crime in Harrow.

Harrow Neighbourhood Watch Plan highlights the important networking role members of Neighbourhood Watch play in passing crime prevention advice and messages to the wider public.

Victim Support Service Plan focuses on providing help, support and advice for victims and witnesses.

Harrow Licensing Policy highlights the key objectives from the Licensing Act 2003 regarding the prevention of crime and disorder, public safety, the prevention of public nuisances and the protection of children from harm.

How the Strategy Priorities were arrived at

A multi-agency project group was set up to oversee the audit to strategy process in Harrow on behalf of the Safer Harrow Management Group. The Safer Harrow Partnership has used four different types of evidence to assess the broad priority areas for the 2005-2008 Crime and Drugs Strategy and are described as follows:

Firstly, the Criminology Department of Middlesex University was engaged to work with the Safer Harrow Partnership to undertake the three-year Crime and Drugs Audit. The University was engaged to ensure an independent view of the issues facing Harrow was incorporated in the audit findings. The development of the audit involved the collection, gathering and analysis of information from many different agencies and sources, to help identify the issues facing Harrow. Both quantitative datasets e.g. Police CRIS data and qualitative datasets, e.g. surveys and feedback were used. The Safer Harrow Partnership has also carried out two community safety⁶ surveys to ensure concerns of residents were included in the audit findings.

Secondly, the Safer Harrow Partnership undertook an extensive consultation exercise on the audit findings. A summary of the audit findings was published and distributed to consult with residents, agencies and stakeholder groups for consultation. The Audit summary provided an overview of the main issues facing Harrow and also included a questionnaire for residents and agencies to feedback their concerns. Both direct consultation (e.g. consultation at Harrow supermarkets) and indirect consultation (e.g. stakeholder group mailout) methods were used to consult with residents, agencies and stakeholder groups. This has included a range of hard to hear groups and disaffected residents. Approximately 5000 residents and 1000 agencies and stakeholder groups have been involved in the consultation process. The results of the consultation show that residents and agencies rate Anti-Social Behaviour, violence against the person, burglary, street crime, drugs and young people as their main priorities to be included in the strategy.

Thirdly, the Safer Harrow Partnership has considered the fifteen Home Office national targets and priorities⁷ in developing the broad priority areas for the strategy. Of particular importance is the recent Home Office priority on developing a three-tiered persistent offender's strategy⁸ and the clear links this has to the national drug strategy and the local preventative strategy. Home Office research shows that it is estimated that out of a million active offenders nationally, 100,000 offenders have 3 or more convictions and are responsible for half of all crime. The active offender population is not static, 20,000 individuals leave this pool every year and are replaced by another 20,000 offenders. The most active 5,000 of this group are estimated to be responsible for one in ten offences. In Harrow, putting in place measures to reduce the number of prolific offenders will greatly improve the quality of life of residents.

Lastly, the Safer Harrow Partnership considered key local agency targets and priorities in deciding the broad priority areas to be included in the strategy. The Harrow Strategic Partnership, which is made up of statutory and community stakeholders agreed its ten priority areas for action for the next ten years by using evidence gathered in the multi-agency Vitality Project. Three of these priorities are directly relevant to this strategy: Anti-Social Behaviour, Burglary and Fear of Crime.

⁶ One survey was published in Harrow Council's magazine Harrow People and aimed at the adult population while another survey was aimed at young people and distributed by Harrow Council Youth Services.

⁷ Home Office targets and priorities are available on www.homeoffice.gov.uk

⁸ Three strands of the priority offender strategy are catch and convict, rehouse and rehabilitate and prevent and deter.

Crime/Drug Audit findings

The crime/drugs audit has highlighted some very important issues that need addressing in Harrow. There seems to be a significant difference between reported crime figures and people's perceptions of crime.

The audit shows that Harrow appears to be a very safe place to live, work and visit, not only in comparison with London but also in respect of London boroughs located within the same family group⁹. In reality, Harrow was ranked the lowest crime borough in London for 2003/2004 with an offence rate of 89.2 per 1000 population. Harrow, also compares well nationally as it is below the national average for overall crime.

Surveys conducted as part of the audit process¹⁰ showed that resident's perception of crime in Harrow is vastly different to what it should be. Residents have indicated in various surveys¹¹ that they believe their quality of life has diminished over the previous three years. Nearly a quarter (24%) of people surveyed indicated that they generally feel unsafe walking alone in Harrow. More significantly, 64% of respondents felt unsafe walking alone after dark in the town centre, compared to only 15% feeling unsafe during daylight. The same surveys showed that 66% of people felt that drug usage and drunk and disorderly behaviour is a problem in Harrow, with the majority of this concern being focused on the town centre. Additionally, surveys show that vandalism, graffiti, abandoned/burnt out vehicles and other deliberate damage are all a major concern for Harrow residents. When asked to rank their priorities for the strategy residents clearly indicated their number one priority to be tackling anti-social behaviour, with violence against the person being a very close second but burglary, street crime, drugs and young people were not seen as important. Motor vehicle crime, hate crime and domestic violence were also not seen as being main priorities for action. In-depth analysis of the audit findings provide some clues as to why residents state their quality of life is getting worse and they experience high fear of crime levels.

Violence against the person offences while still low for London, have increased by 7.5% since 2001 with common assault being the most significant, increasing by 23% since 2001. The Harrow town centre area comprising of Marlborough, Greenhill and Wealdstone wards and is used by the majority of residents on a daily basis for shopping, work, leisure contributed over 27% of violence against the person offences since 2001. Just over 42% of violent crime is domestic violence related, with Harrow ranking the 10th highest in London for repeat victimisation. 78% of complaints to the Council Housing Assessment team were requests to move due to violence from partners or ex-partners. Sexual offences had the second 2nd lowest rate in London since 2001, but sexual offences have increased by 17.5% since 2001. The number of Ambulance Service incidences has increased by 28% since 2001, with the hotspots being in Greenhill, Marlborough, Harrow Weald and Wealdstone. Analysis shows that violent crime has cost £158,517,000 since 2001.

Harrow is ranked 9th lowest in London for street crime offences from 2001-2004, having decreased by 30% since 2001. Greenhill and Marlborough are the main hotspots, with the majority of crimes occurring in the after school period, committed on and by young people and therefore, seen as an extension of school bullying. Since April 2004, street crime has increased by approximately 40%.

Burglary accounts for 15% of Harrow's total crime that is greater than the London wide proportion of 10%. From 2001-2004 Harrow was ranked 16th out of 32 London Boroughs, which is a significantly higher ranking than Harrow's overall crime placing in London. Residential burglary accounts for 72% of all burglary in Harrow, with 75% of residents surveyed

⁹ The Home Office organises similar boroughs into Family groupings. London Boroughs in Harrow family are Barnet, Bexley, Bromley, Ealing, Havering, Hillingdon, Hounslow, Redbridge and Sutton.

¹⁰ Results from Harrow Council Residents Satisfaction survey and Safer Harrow Community Safety surveys.

¹¹ Results from Harrow Council Residents Satisfaction survey and Safer Harrow Community Safety surveys.

indicating they are worried about having their homes being broken into. The hot spots for residential burglary based on per 1000 population incidence rate are Rayners Lane, Pinner, Roxbourne and Greenhill.

Motor vehicle crime accounts for 23% of all reported crime in Harrow. There has been an 8.5% increase since 2001. Theft from motor vehicle accounts for 45% of all motor vehicle crime and criminal damage accounted for 31%. Greenhill, Pinner and Stanmore Park show the areas with highest concentrations.

What is apparent is that while reported crimes rates are very low in Harrow, residents believe low-level nuisance, disorderly and anti-social behaviour crimes, affects their quality of life. Additionally, public confidence that agencies will tackle these types of issues is not high. Hence, the reason for 39% of residents indicating that they did not report these types of crimes to the Police. Using the Home Office ASB 'One day count' carried out in September 2003 it has been calculated that during the previous three years there were approximately 46,000 ASB incidents in Harrow. 83% of these incidents were for abandoned vehicles, noise and nuisance behaviour. 43% of Fire Service incidents since 2001 were non-accidental, mainly hoax calls and malicious fires. The hotspots for Anti-social behaviour are Greenhill, Marlborough, Wealdstone, Rayners Lane, Roxeth, Pinner, Queensbury and Edgware.

The audit also shows that young people in Harrow are four times more likely to be a victim than an offender¹². The true level of hate crime and domestic violence is difficult to gauge but feedback from agencies show that both are underreported. There has been a rise in homophobic crimes, albeit from a very small baseline.

Harrow also has a very diverse community, which has a huge impact on how services for residents are delivered. The 2001 Census shows that 28% of the population were aged between 15-34 years, which is the high-risk group for victimisation, and this group has no specific services provided by main statutory agencies. A quarter of unemployed people in Harrow are males aged 16-24 years, which is also the high-risk group for offending and being a victim. 7% of Harrow's population is over 75 years old and 22% of households are pensioner households. Harrow has the second largest Hindu and third largest Jewish population nationally.

¹² Comparing CRIS victim data for under 18 year olds with Harrow Youth Offending Service data.

Priority Area 1: To reduce the impact of ASB and fear of crime by improving quality of life and the public realm through the ASB Strategy and Liveability Agenda.

Evidence base:

- Local surveys show that quality of life and crime are the main concerns of residents.
- Consultation carried out as part of the development of the Safer Harrow Crime and Drugs Strategy shows that residents rank Anti-Social Behaviour (ASB) as their most important priority for action.
- ASB is ranked as the number one Harrow Strategic Partnership (HSP) priority in the ten year Community strategy.
- Major aim of New Harrow Project, local Policing plan and Safer Neighbourhood (SN) roll out programme.
- In the audit 66% of people felt that drug usage and drunk and disorderly behaviour is a problem in Harrow, with the majority of this concern being focused in the town centre.
- 43% of Fire Service incidents are non-accidental i.e. malicious fires and hoax calls.
- The British Crime Survey 2003/2004 states that 76% of over 16 year olds perceived one or more behaviours to be a problem in their area. A large percentage had experienced problems in the previous 12 months, with most on a frequent basis, with only a small percentage had reporting to agencies.
- Home Office Research Study Finding Number 252 indicates that initiatives which target 'hard pressed urban' areas and focus on increasing the ability and willingness of the community to deal with local problems tends to be successful.

Definition: Anti-social behaviour is persistent and ongoing disruptive behaviour that reduces the quality of life for others. The Home Office list of behaviours to define Anti-Social Behaviour is listed in Appendix 3.

Co-ordinating Group: Harrow Anti-Social Behaviour Strategy Group

Lead Officer: Community Safety and Maintenance Services Group Manager, Harrow Council

Partner agencies: Urban Living, People First – Harrow Council, Harrow Police, Fire Service, Probation, Youth offending Service, Primary Care Trust, Drug Action Team (DAT), Neighbourhood Watch and the voluntary sector.

Aim: To ensure the partnership response to quality of life and anti-social behaviour issues is operationally co-ordinated and uses a problem-solving evidence base to prioritise issues.

Objective/outcome: To Reduce the impact of Anti-Social Behaviour on Harrow Residents.

Performance measure: Improvement of quality of life as indicated by the MORI survey.

Baseline information: 67% of residents perceive their quality of life has worsened due to crime according to the Harrow Council Best Value MORI survey in 2003. PSA 2, Fire Service targets (To be agreed by HO).

Broad Interventions/actions to be implemented to tackle this priority (please note that specific initiatives will be described in the yearly action plans to be developed using evidenced-based problem solving techniques and best practice examples):

- Implementation of the Safer Harrow Anti-Social Behaviour Strategy by working in partnership with local agencies to develop a three tiered approach that jointly considers education, prevention and enforcement (e.g. ASBO) measures to address the concerns of the public.
- Development of targeted public awareness campaigns to raise the awareness of anti-social behaviour concerns of residents and the work of agencies.
- Support the Fire Service to reduce the number of malicious fires and hoax calls.
- Expansion of the ward based Safer Neighbourhoods Policing Reassurance Teams.
- Expansion of the New Harrow Project (NHP) to address local concerns about their neighbourhoods.
- Cleaning graffiti on parks and buildings in partnership with Probation, Police and the Council.
- Implementation of "Operation Clean sweep" a multi-agency attack on low level crime in hotspot areas.

- Further development of area based initiatives at ASB hotspots (e.g. Byron & Chandos Recreation ground, Rayners Lane, Pinner Estates and Cedars area).
- Use of the mobile CCTV van to ensure an evidence-based approach is adopted in deciding the best course of action for ASB issues.

Priority Area 2: Violence Against the Person

Evidence base:

- Violent Crime has increased by 7.5% since 2001 with common assault increasing 23%.
- The majority of crimes occur in Greenhill, Marlborough and Wealdstone.
- 77% of the economic and social cost of crime in Harrow since 2001, with a cost of £158,517,000
- National, London and Local policing priority.
- 73% of street crime offences are for personal property offences.
- 42.7% of violent crimes are domestic violence related.
- The number of reported Domestic violence incidences has increased by 4% since 2001.
- Residents in Harrow rate violent crime as their second most important priority for action
- 64% of people surveyed feel unsafe after dark in the town centre.
- Ambulance Service incidents have increased by 28% since 2001.
- Home Office Research shows that many crimes could be prevented if the public were more aware of basic crime prevention messages.

Definition: Violent crime is defined as the British Crime survey Comparator crimes of theft from person, personal robbery, common assault and wounding that includes actual bodily harm and domestic violence.

Co-ordinating agency: Harrow Police

Lead Officer: Detective Chief Inspector

Partner agencies: Council, Police, MAF, DAT, DV forum, Ambulance Service, PCT, LFB, Crime Prevention Panel, Victim Support, Neighbourhood Watch and voluntary sector groups.

Aim: Enhance community ownership and responsibility in reducing violent crime, and the fear of crime (targets to be agreed by HO).

Objective/outcome: Improved reduction rate of comparator crimes (PSA1), community involvement by increased public participation in delivering crime reduction measure with statutory services, fear of crime (targets to be agreed by HO).

Performance measure: Reduction of violent crime (using the comparator table), Quality of investigations, the type of crimes reported, sanctioned detections. (to be agreed by HO).

Baseline information: Same as performance measure (to be agreed by HO).

Broad Interventions/actions to be implemented to tackle this priority (please note that specific initiatives will be described in detail in the yearly action plans that are developed for each priority using evidenced based problem solving techniques and best practice examples):

- Mapping and targeting priority areas & People (PPO)
- Setting of investigative standards & a positive arrest policy for Domestic violence.
- Develop initiatives with DAT and Licensing Officers particularly at places of public entertainment.
- Develop partnerships with public houses and licensed places of public entertainment (e.g. pubwatch)
- Proactive Police operations e.g. operation Optic
- Support domestic violence projects including, Sanctuary and SNAPSHOT project.
- Support Hate crime projects including the development of third party reporting sites.

Priority Area 3: Property Crime

Evidence base:

- National, London and Local Policing priority
- Harrow was placed 16th out of 32 boroughs for residential burglary from 2001-2004, which is significantly higher than its overall crime placing in London.
- 75% of people surveyed are worried about having their home broken into.
- Hotspots for residential burglaries are Rayners Lane, Pinner, Roxbourne and Greenhill wards.
- 8.5% increase in Motor Vehicle crime since 2001, with theft from a motor vehicle accounting for 45%.
- 22% of Harrow's Crime is for theft and handling, which has strong links to drugs related crime.
- Home Office Research shows that many crimes could be prevented if the public were more aware of basic crime prevention messages.

Definition: Property Crime is defined as British Crime Survey Comparator crimes of Theft of and from a motor vehicle, theft of a pedal cycle, residential burglary, and criminal damage including motor vehicle.

Co-ordinating agency: Harrow Police

Lead Officer: Superintendent Harrow Police

Partner agencies: Council, Police, MAF, DAT, DV forum, PCT, LFB, TFL, Crime Prevention Panel, Victim Support, Neighbourhood Watch and voluntary sector groups

Aim: Enhance community ownership and responsibility in reducing crime, drugs and the fear of crime (targets to be agreed)

Objective/outcome: Improved reduction rate of comparator crimes (PSA1), community involvement by increased public participation in delivering crime reduction measure with statutory services (targets to be agreed by HO).

Performance measure: Reduction in property crime, Quality of investigations, sanctioned detection's (to be agreed by HO).

Baseline information: Number of reports on property crime (BCS comparator) (to be agreed by HO).

Broad Interventions/actions to be implemented to tackle this priority (please note that specific initiatives will be described in detail in the yearly action plans that are developed for each priority using evidenced based problem solving techniques and best practice examples):

- Development of SafeHomes project
- Proactive Police Operations e.g. Operation Challenger
- Secured by Design accreditation of public car-parks
- Targeted community public awareness campaigns and attendance at community events
- Enhance the number of NHW members including business watch & pub watch etc
- Mapping and targeting priority areas & People (PPO)
- Setting of investigative standards & maintaining these.
- Develop initiatives with CCTV and Drugs and Alcohol Team particularly at places of public entertainment.

Priority Area 4: Tackling and Preventing Youth Crime

Evidence Base:

- Young people in Harrow are four times more likely to be a victim of a crime than an offender.
- The high-risk victim group in Harrow is young males aged 14-17 years.
- The new Children's Bill places an increased emphasis on keeping young people safe from harm.
- Youth Justice Board research shows that truancy and absences from school are the main predictor of offending behaviour in young people.
- Research by the Childline Charity showed that more than half of primary school and a quarter of secondary school pupils stated they had been bullied in their present school term.
- Research by the National Commission of Inquiry into the Prevention of Child Abuse estimated that the cost of child abuse to statutory and voluntary agencies is £1 billion per year in the UK.
- The Edinburgh Study of Youth Transitions and Crime Report shows that there is a clear link between being bullied/victimised and later involvement in offending.

Definition: Young people are defined as anyone up to 19 years old who lives in Harrow. We will specifically target our efforts on young people who are either victims, offenders or at risk of offending.

Co-ordinating agency: Children and Young Persons Executive (To be confirmed).

Lead Officer: Director of Children Services (To be confirmed)

Partner agencies: Harrow Council, Harrow Primary Care Trust, Police, Schools, Safeguarding Board, Fire Service, DAT, YOS, DV Forum, MAF Victim Support Service, Connexions and Children's Fund.

Aim: To implement a co-ordinated response to reduce the number of young people being victimised or getting involved in offending.

Objective/outcome: Reduction in the number of victims and offenders under the age of 18 in Harrow by 2008 (to be agreed by HO).

Performance measure: Reduce the number of victims by 2008. Reduce the number of young people who are convicted of an offence by 2008 (to be agreed by the HO).

Baseline information: The average number of victims of crime under 18 during 2001-2004. The average number of young people offending during 2001-2004 (to be agreed by the HO).

Broad Interventions/actions to be implemented to tackle this priority (please note that specific initiatives will be described in the yearly action plans to be developed using evidenced-based problem solving techniques and best practice examples):

- Develop and implement the Harrow Youth Crime Prevention Strategy and the Prevent and Deter strand of the IPPO.
- Support the development of anti-bullying campaigns.
- Support the development of the Children's trust and safe guarding boards in Harrow.
- Support the roll out of Youth Inclusion Support Panels.
- Support local truancy services and parenting support programmes.
- Support the actions in the Youth Justice Plan.
- Support targeted crime prevention initiatives including the Junior Citizens scheme, Summer Action, Children's fund, Police Schools Involvement Officers and other community led initiatives.
- Develop joint working between the Domestic Violence and Safeguarding Board.

Crosscutting Theme: Community Involvement and Diversity

Evidence base:

- Local agency feedback shows that Hate Crime and Domestic Violence is underreported in Harrow.
- There is a lack of awareness amongst agencies about their legal obligations under section 17 of the Crime and Disorder Act 1998, as section 17 hasn't been fully implemented in Harrow.
- Home Office research demonstrates the importance of effective data exchange and information-sharing systems to tackle crime.
- Home Office Development and Practice Report 27 demonstrates the importance of community involvement in crime and drugs reduction.
- Home Office Research shows that many crimes could be prevented if the public were more aware of basic crime prevention methods.
- Report recommendations 15 & 16 into the death of Stephen Lawrence concerning third party reporting cites a need for a comprehensive system of reporting and recording of all racist incidents and crimes.

Definition: Community and Diversity as defined in Public Service Agreements 6 & 7 (to be agreed)

Co-ordinating agency: Multi-Agency Forum

Lead Officer: Chair of the Multi-agency Forum

Partner agencies: Council, Police, Multi Agency Forum, YOT, Drug Action Team, Domestic Violence Forum, Primary Care Trust, Probation, Fire Service, Crime Prevention Panel, Victim Support, Neighbourhood Watch and voluntary sector groups.

Aim: To mainstream community involvement policy developments into each of the four main priority areas.

Objective/outcome: Improved community involvement by increased public participation in delivering crime/drugs reduction measures together with statutory services (targets to be agreed by the H.O).

Performance measure: Use of Ringmaster by residents, business and schools; improvement in number of third party reports; improved recruitment in number of Special Constables; number of street warden initiatives; number of community volunteers, number of joint training and funding initiatives; and number of Neighbourhood Watch schemes (to be agreed by the H.O).

Baseline information: Funding group information, Ringmaster reports and involvement, attendance at forums and joint training sessions, number of businesses involved in the retail radio link, number of new businesses involved in community & retail initiatives (to be agreed by the H.O).

Broad policy areas that need to be incorporated into priorities (please note that specific initiatives will be described in the yearly action plans to be developed using evidenced-based problem solving techniques and best practice examples):

- Setting up third party reporting sites.
- Ensure equalities and diversity standards are mainstreamed across agencies.
- Support Community cohesion and community contact initiatives.
- Implementation of Section 17 into work practices and ensure 10 point plan is adopted.
- Implementation of systematic information sharing protocols and problem-solving techniques.
- Development of a Safer Harrow communications/public awareness plan.
- Enhance the number of Neighbourhood Watch members and community volunteers.

Crosscutting Theme: Implement the Prolific and Priority Offenders Plan

Evidence base:

- Home Office national priority to reduce crime and re-offending by targeting and managing a small group who commit the most crime.
- Home Office Research shows that 10% of offenders commit 50% of crime and 1% of priority offenders commit 9% of crimes
- Targeting priority offenders should help free up existing resources to tackle other crimes
- Pilots involving agencies working together to reduce crime (York, Guildford and Bexley), have yielded positive outcomes. For example reduction in re-offending, increase in successful prosecutions and better enforcement.
- Home Office Crime Detection and Prevention Series Paper 90 ' Repeat Victimisation – Taking Stock' by Ken Pease outlined that prolific offenders often target previous victims and locations repeatedly.

Definition: Priority offenders are defined as persons identified through the crime profiling system adopted by IPPO. (to be agreed by the Home Office).

Co-ordinating agency: PPO Steering Group

Lead Officer: Head of Probation Services for Harrow and Hillingdon

Partner agencies: Council, Police, PCT, Probation, Drug and Alcohol Team (DAT) and YOT

Aim: To implement the three strands of the PPO plan by 2008

Objective/outcome: To reduce the number of crimes committed in Harrow by focusing police, probation, YOT and other community agency resources on a small group of identified prolific offenders

Performance measures: (To be agreed by HO)

- Reduction in number of crimes committed by PPO group
- Reduction in rate of re-offending amongst PPO group
- Reduction in number of breaches of community orders and licences amongst PPO group
- All PPO breaches of community orders enforced within 24 hours and court date acquired within 10 days of failed absence in 90% of cases
- Action taken with respect to PPO licence breaches within 24 hours
- 70% or more of PPOs comply fully with their licence or community order

Baseline information: To be agreed by the Home Office

Broad Interventions/actions to be implemented to tackle this priority (please note that specific initiatives will be described in detail in the yearly action plans for each priority that are developed using evidenced based problem solving techniques and best practice examples):

- Development of the PPO strategy including the three strands of Catch and convict, resettle and rehabilitate and prevent and deter in accordance with Home Office guidance.
- Set up a PPO Steering Group to oversee and co-ordinate the work of the PPO panel
- Set up a dedicated PPO team comprised of Police, Probation and YOT staff.
- Development of a programme to be delivered by dedicated PPO team specifically designed for this group of offenders involving intensive supervision, fast track enforcement, increased surveillance and access to services that positively impact on re-offending rates.
- Development of targeted drug and alcohol treatment services for prolific offenders.

- Development of protocols for information sharing between all criminal justice partners and community agencies in the Harrow area.
- Provision of targeted services that address factors affecting re-offending e.g. housing, education, employment and mental health services.
- Develop system of joint Police/Probation or police/YOT visits to PPOs serving prison sentences in month leading up to release
- Develop links with local prisons with a view to agreeing an arrangement for PPOs to be transferred to a London prison prior to release
- Provision of funding for initiatives that target the implementation of this strategy

Crosscutting Theme: Drugs and Alcohol

Evidence base:

- A Home Office national priority to reduce drug misuse and drug related crime.
- 27% reduction in total drug offences since 2001. However, within the total, there has been a reported increase of 60% for cocaine and heroin derivatives (Substance Misuse Needs Assessment 2004).
- 85% of drug offences (all categories) in Harrow since 2001 were for possession and the remainder (15%) for trafficking and supply.
- National research shows that only 40% of local drug users are accessing treatment services.
- National Treatment Outcome Research Study estimates that for every £1 spent on treatment there is a saving of £3 on criminal justice costs.
- Youth Survey 2001 showed that vulnerable young people are more likely to have drug misuse problems e.g. 60% of excluded children reported using cannabis and 20% used amphetamine and ecstasy on a regular basis.
- Police report that 90% of known burglars in Harrow are regular users of Class A drugs, with research showing that over 50% of people referred to treatment from the Arrest referral scheme committed acquisitive crimes, such as shoplifting, vehicle crime and burglary.
- 46% of Harrow Drug and Alcohol Treatment service clients are for alcohol mis-use.
- Youth referrals to the Harrow Drug and Alcohol Service have increased by 89% since 2001.

Definition: This is defined as drug and alcohol-related crime and treatment provision.

Co-ordinating agency: Drugs and Alcohol Group

Lead Officer: Chief Executive PCT (To be confirmed)

Partner agencies: DAT, CDRP, Harrow PCT, Harrow Council, Police, Probation and YOS.

Aim: To implement the government's ten-year national drug strategy.

Objective/outcome: Increase the numbers into treatment and reduce drug and alcohol-related crime (To be agreed by the Home Office).

Performance measure: (To be agreed by the Home Office).

Baseline information: (To be agreed by the Home Office).

Broad policy areas that need to be incorporated into priorities:

- Review the Drug Action Team remit with a view to incorporating alcohol-related issues.
- Increase access to treatment and support for BME communities.
- Establish a dedicated Criminal justice Team to develop a through-care and aftercare service, an enhanced Arrest referral scheme and support the persistent and prolific offenders programme
- Develop Tier 2 services in Harrow that offers drug advice, outreach work and a dedicated day care programme
- Implement public awareness and education initiatives e.g. website
- Develop drugs education and support programme aimed at both professionals and young people
- Develop a young persons virtual drug misuse team across agencies in Harrow.
- Ensure drug and alcohol issues are incorporated into licensing initiatives.
- Maintain and develop joint Police/Council licensing projects and Class A drug operations to reduce supply.
- Develop a user/carer group to aid the future planning of services.
- Develop data analysis methods to enable evidenced-based problem solving to aid planning of services.

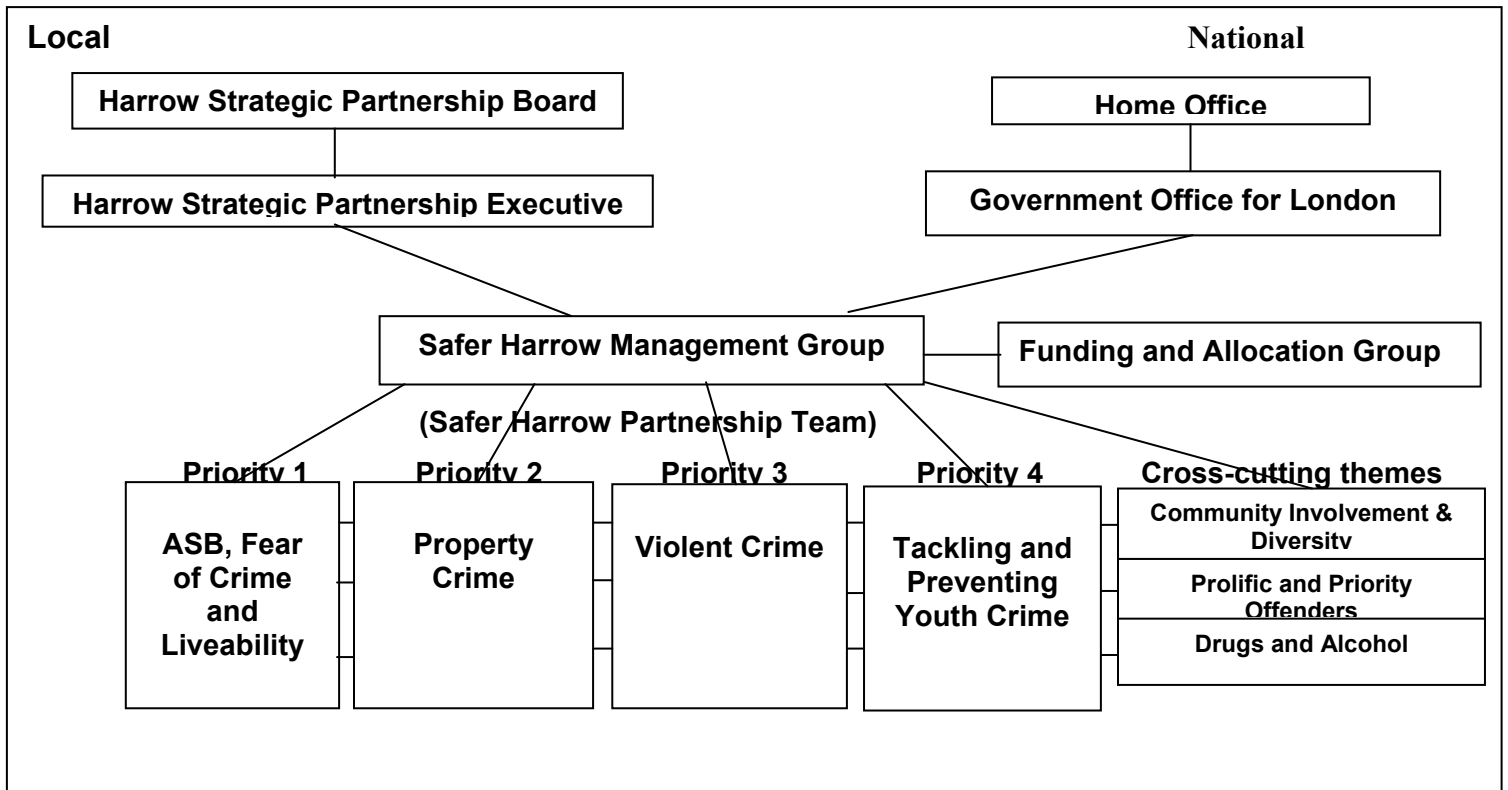
Partnership structure and accountabilities to deliver and monitor the strategy

To ensure the strategy achieves its vision and specific targets set out in the action plans, the Safer Harrow Partnership will implement a streamlined structure that outlines the processes and responsibilities for delivering the strategy – the structure is shown in figure two. Figure 2 shows that there is a local and national reporting process for delivering the strategy that will be implemented to monitor the strategy outcomes.

The Safer Harrow Management Group (SHMG) has overall responsibility for ensuring that Harrow is a safer place to live, work and visit. The Safer Harrow Partnership Team (CRU and DAT) has the day to day responsibility for co-ordinating the delivery of the strategy priorities on behalf of the Safer Harrow Management Group. The SHMG reports to the Harrow Strategic Partnership Executive who has overall responsibility for strategic direction and decision-making in Harrow. A joint funding and allocation group will determine funding, based on evidence of the level of partnership resources needed to tackle each of the priority areas on an annual basis.

Each individual priority area and cross-cutting theme identified in the strategy will have a lead officer group, which will be set up to tackle that issue over the next three years. Each of the groups will be required to implement the SARA problem-solving model (see appendix 1 for explanation) and develop, agree and publish annual action plans that highlight the range of multi-agency initiatives that will be implemented. Each group and respective lead officer will also be required to report on performance, including finances, on a quarterly basis to the SHMG and Government Office for London against agreed targets included in the action plans. The SHMG will monitor performance against agreed targets and decide if any remedial action is necessary to ensure strategy priorities are being addressed and tackled. The Government Office for London will in turn monitor the performance of the Safer Harrow partnership on behalf of the Home Office.

Figure 2: Safer Harrow Partnership and Reporting Structure



Partnership Investment Required

To make Harrow a safer place to live by 2008, and to deliver on the strategy priorities and crosscutting themes, will require a substantial investment from the Safer Harrow Partnership as a whole.

An investment analysis using Home Office recommended calculators has been carried out using cost of crime information for Harrow (see Appendix 4). This highlights the different level of investment required to achieve various crime reduction targets by 2008 i.e. 5%, 10%, 15% and 20% reductions. The results of the investment analysis should be used as a guide to focus partnership resources, as the analysis carried out does have its limitations (these are mentioned in Appendix 4).

The investment analysis clearly demonstrates that if the Safer Harrow Partnership is to meet Public Service Agreement 1 of reducing overall crime by 17%-20% (as defined by BCS comparator) it will need to invest approximately £868,048 each year in direct project funding. Investing this amount will in turn lead to an approximate social and economic cost of crime saving of £14,322,786 by 2008 in Harrow.

The Safer Harrow Best Value review carried out in 2001 demonstrated that the Safer Harrow Partnership is high performing given the level of investment. Based on the previous three years investment, it will be a considerable challenge for the Safer Harrow Partnership to achieve the reduction targets contained in the strategy.

Significant project investment is required to ensure the priority and crosscutting themes objectives are achieved by 2008. A list of potential funding sources for each priority area and crosscutting theme is listed in Appendix 5 and will support delivery of the strategy.

APPENDIX 1: Basic Crime Reduction Theories

SARA - Scanning, Analysis, Response, Assessment

SARA has been used for some time in problem-oriented policing (POP) as a methodical process for problem solving. It is an integral part of the philosophy of community policing in the US. It is of use to crime reduction practitioners in any field as applying the process can ensure that a crime problem is effectively identified and tackled, avoiding any waste of time and resources if only part of the actual problem is identified. SARA is also commonly used within the police service, so an understanding of the process may help partner organisations to work with the police to tackle local problems.

Its four stages are:

Scanning – spotting problems using knowledge, basic data and electronic maps

Analysis – using hunches and information technology to dig deeper into problems' characteristics and underlying causes

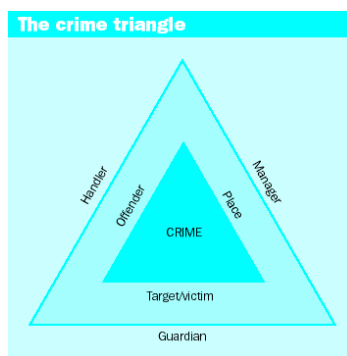
Response – devising a solution, working with the community, wherever possible

Assessment – looking back to see if the solution worked and what lessons can be learned.

Routine Activity Theory (RAT):

RAT states that for a predatory crime to occur, 3 elements must be present when any crime is committed. RAT incorporates the crime triangle, sometimes referred to as the "problem analysis triangle" (PAT). RAT states that when a crime occurs, 3 things happen at the same time and in the same space:

- a suitable target is available
- there is the lack of a suitable guardian to prevent the crime from happening
- a likely and motivated offender is present

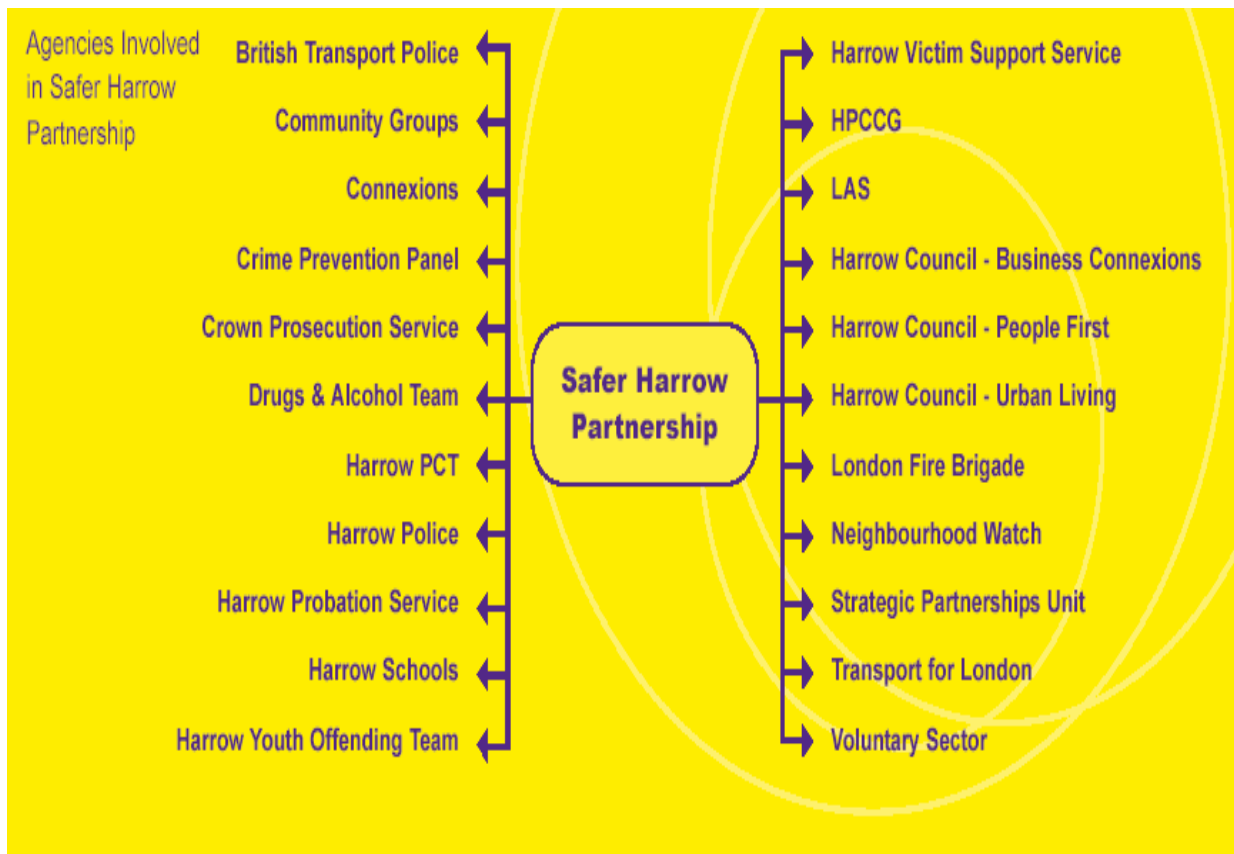


To reduce crime you must remove at least one of the three elements of offender, target/victim and location. This can be achieved by focusing on the three controller elements of Handler, Manager and Guardian:

- For the target/victim, this is the **capable guardian** of the original formulation of routine activity theory – usually people protecting his or her own belongings or those of family members, friends, neighbours and co-workers. Some examples include police patrols, security guards, Neighbourhood Watch schemes, Close Circuit Television (CCTV) systems.
- For the place, the controller is the **place manager**, a person who has some responsibility for controlling behaviour in the specific location such as a bus conductor, Police Officer, Street Warden or teacher in a school.
- For the offender, this is the **handler**, someone who knows the offender well and who is in a position to exert some control over his or her actions. Handlers include parents, siblings, teachers, friends and spouses.

To have effective crime reduction you must concentrate activities and resources on all three areas and use a mixture of approaches that focus on all four areas of prevention, enforcement, repeat victimisation and situational (e.g. CCTV). Focusing on one of these areas, such as enforcement will only displace crime to another area.

APPENDIX 2: List of agencies involved in the Safer Harrow Partnership



APPENDIX 3: LIST OF BEHAVIOURS TO BE INCLUDED IN THE ONE DAY COUNT OF ANTI-SOCIAL BEHAVIOUR, 10TH SEPTEMBER 2003

Misuse of public space	Disregard for community / personal wellbeing	Acts directed at people	Environmental damage
<ul style="list-style-type: none"> • Drug / substance misuse & dealing <i>Taking drugs</i> <i>Sniffing volatile substances</i> <i>Discarding needles / drug paraphernalia</i> <i>Crack houses</i> <i>Presence of dealers or users</i> • Street drinking • Begging • Prostitution <i>Soliciting</i> <i>Cards in phone boxes</i> <i>Discarded condoms</i> • Kerb crawling <i>Loitering</i> <i>Pestering residents</i> • Sexual acts <i>Inappropriate sexual conduct</i> Indecent exposure <ul style="list-style-type: none"> • <i>Abandoned cars</i> • Vehicle related nuisance & Inappropriate vehicle use <i>Inconvenient / illegal parking</i> <i>Car repairs on the street / in gardens</i> Setting vehicles alight <i>Joyriding</i> <i>Racing cars</i> <i>Off road motorcycling</i> <i>Cycling / skateboarding in pedestrian areas / footpaths</i> 	<ul style="list-style-type: none"> • Noise <i>Noisy neighbours</i> <i>Noisy cars / motorbikes</i> <i>Loud music</i> <i>Alarms (persistent ringing / malfunction)</i> <i>Noise from pubs / clubs</i> <i>Noise from business / industry</i> • Rowdy behaviour <i>Shouting & swearing</i> <i>Fighting</i> <i>Drunken behaviour</i> <i>Hooliganism / loutish behaviour</i> • Nuisance behaviour <i>Urinating in public</i> <i>Setting fires (not directed at specific persons or property)</i> <i>Inappropriate use of fireworks</i> <i>Throwing missiles</i> <i>Climbing on buildings</i> <i>Impeding access to communal areas</i> <i>Games in restricted / inappropriate areas</i> <i>Misuse of air guns</i> <i>Letting down tyres</i> • Hoax calls <u>False calls to emergency services</u> • Animal related problems <i>Uncontrolled animals</i> 	<ul style="list-style-type: none"> • Intimidation / harassment <i>Groups or individuals making threats</i> <i>Verbal abuse</i> <i>Bullying</i> <i>Following people</i> <i>Pestering people</i> <i>Voyeurism</i> <i>Sending nasty / offensive letters</i> <i>Obscene / nuisance phone calls</i> Menacing gestures <i>Can be on the grounds of:</i> <i>Race</i> <i>Sexual orientation</i> <i>Gender</i> <i>Religion</i> <i>Disability</i> <i>Age</i> 	<ul style="list-style-type: none"> • Criminal damage / vandalism Graffiti Damage to bus shelters Damage to phone kiosks <i>Damage to street furniture</i> <i>Damage to buildings</i> <i>Damage to trees / plants / hedges</i> • Litter / rubbish <i>Dropping litter</i> <i>Dumping rubbish</i> <i>Fly-tipping</i> <i>Fly-posting</i>

Appendix 4: Cost/Benefit of Crime Investment

Research has been completed into the social and economic costs of crime, most notably Home Office Research Study 217 – Sam Brand and Richard Price, 2000. By assigning costs to various crimes it is possible to determine the financial impact these crimes have on society and to also give an indication of the level of investment needed to achieve reductions in crime in the future. This is particularly important, as the Safer Harrow Partnership is required to meet Public Service Agreement 1 of reducing overall crime (as defined by the BCS comparator) by 17.5-20% reduction.

A variety of crime reduction targets are listed below, with the associated cost savings and the investment required to achieve these targets. The investment required relates to direct project-funding investment required and does not include indirect investment costs i.e. management and project monitoring costs. To quantify the level of crime reduction investment needed for Harrow, we have used the costs of crime analysis completed as part of the Byron Recreation Ground project.

Byron Recreation Ground project

- Investment = £220,583 per year
- Cost of Crime savings = £1,211,660 per year

Therefore: Invest to save ratio = 5.50

Level of Investment required to meet various crime reduction targets in Harrow to 2008

Target Options	2005/06	2006/07	2007/08	Total
5% reduction i.e. 1.66% reduction each year	-1.66%	-1.66%	-1.66%	5% reduction
■ Social and economic cost of crime saving	£1,157,397	£1,157,397	£1,157,397	£3,472,191
Investment required	£210,436	£210,436	£210,436	£631,308
10% reduction i.e. 3.33% reduction each year	-3.33%	-3.33%	-3.33%	10% reduction
■ Social and economic cost of crime saving	£2,387,131	£2,387,131	£2,387,131	£7,161,393
Investment required	£434,024	£434,024	£434,024	£1,302,071
15% reduction i.e. 5% reduction each year	-5%	-5%	-5%	15% reduction
■ Social and economic cost of crime saving	£3,616,865	£3,616,865	£3,616,865	£10,850,595
Investment required	£657,612	£657,612	£657,612	£1,972,835
20% reduction i.e. 6.66% reduction each year	-6.66%	6.66%	6.66%	20% reduction
■ Social and economic Cost of crime saving	£4,774,262	£4,774,262	£4,774,262	£14,322,786
investment required	£868,048	£868,048	£868,048	£2,604,143

Limitations:

- The cost of crime analysis is only for: violent crime, sexual offences, residential burglary, and theft of and from a motor vehicle, robbery of a business and personal property and does not totally match the BCS comparator list.
- The investment costs for the Byron Recreation Ground project only relates to direct project costs e.g. installation of CCTV, police time, upgrading leisure centre etc and not for indirect costs e.g. staff time for project planning and monitoring.
- Assume that each year crime will reduce by the same amount and the costs of various crimes remains the same until 2008.

Appendix 5: Sources of Funding for 2005-2008 Safer Harrow Crime/Drugs Strategy

Below is a list of actual and potential funding sources that lead groups can use to deliver on the specific priorities and themes contained within the strategy.

Priority Theme	Funding Source
<ul style="list-style-type: none"> • Through the Anti-Social Behaviour Strategy and Liveability agenda reduce the impact of ASB and fear of crime on Harrow Residents by improving quality of life and the public realm. • ASB and Fear of Crime are Community Strategy priority themes 	<ul style="list-style-type: none"> • NHP Public Realm funding and growth for 2005/2006, • Ring fenced ASB funding from Home Office Safer and Stronger Communities Fund (SSCF) • Housing funding • Media Communications Plan funded/resourced by SSCF and Corporate Communications • Safer Neighbourhoods programme
<ul style="list-style-type: none"> • Violence Against the Person, particularly robbery and domestic violence 	<ul style="list-style-type: none"> • Robbery LPSA capital and revenue funding (revenue growth included for 2005/2006) • Safer Neighbourhoods Programme • Police Operations 'Challenger' and 'Boxer' • SSCF funding • Council Grant (Domestic Violence) • Housing Funding • Childrens Fund • Positive Action For Young People • Childrens Trust • Police Borough Command Unit Fund (BCUF) • Youth Justice Team (YOT) funding
<ul style="list-style-type: none"> • Property Crime, particularly residential burglary and vehicle crime • Residential Burglary is a Community Strategy priority theme 	<ul style="list-style-type: none"> • Safer Homes initiative jointly funded with Harrow Police using Council renovation grant funding • Safer Neighbourhoods Programme • SSCF • BCUF
<ul style="list-style-type: none"> • Tackling and Preventing Youth Crime 	<ul style="list-style-type: none"> • Schools Cluster Programme • Safer Schools initiative • Robbery LPSA capital and revenue funding (revenue growth included for 2005/2006) • SSCF funding • Council Grant (Domestic Violence) • Childrens Fund • Positive Action For Young People (PAYPS) • Childrens Trust • Police Borough Command Unit Fund (BCUF) • Youth Justice Team (YOT) funding • Ring fenced ASB funding from Home Office Safer and Stronger Communities Fund (SSCF) • Drugs Treatment LPSA, capital and revenue.
<ul style="list-style-type: none"> • Community Involvement and Diversity (Cross Cutting theme) 	<ul style="list-style-type: none"> • SSCF • BCUF • NHP Public Realm funding and growth for 2005/2006, • Safer Neighbourhoods Programme
<ul style="list-style-type: none"> • Drugs and Alcohol 	<ul style="list-style-type: none"> • Throughcare/aftercare funding • DAT Partnership Support & Pooled Treatment budget • Dept of Health Healthy Schools & Targeted Prevention • YOT Funding • Home Office Substance Misuse Grant • Tier 3&4 Young Persons Grant • DFES Connexions • SSCF • Drugs LPSA
<ul style="list-style-type: none"> • Implement the Prolific and Priority Offenders Plan 	<ul style="list-style-type: none"> • SSCF • Probation Service (mainstream funding) • BCUF

Contact Details

Chair of Safer Harrow Partnership

Harrow Police Borough Commander

Bob Carr

bob.carr@met.police.uk

Harrow Council

Crime Reduction Manager

Ian Pearce

ian.pearce@harrow.gov.uk

0208424 1997

Drug Action Team Co-ordinator

Lizzie Reid

lizzie.reid@harrow.gov.uk

0208424 7541

Harrow Police

Partnership Chief Inspector

John Whittaker

john.whittaker@met.police.uk

Harrow Primary Care Trust

Chief Executive

Andrew Morgan

Probation

Head of Probation for Harrow and Hillingdon

Hermione Wright

Hermione.Wright@london.probation.gsx.gov.uk

Fire Service

Harrow Borough Fire Service Commander

Mick Newton

MICK.NEWTON@london-fire.gov.uk

Government Office for London:

Government Office for London Crime Division Advisor (North-West)

Alison Dale

adale.gol@go-regions.gsi.gov.uk

Government Office for London Drugs Division Advisor (Northwest)

Leo Downer

ldowner.gol@go-regions.gsi.gov.uk